

Pioneer

DJ CONTROLLER

DDJ-WeGO 2



<http://pioneerdj.com/support/>

The Pioneer DJ support site shown above offers FAQs, information on software and various other types of information and services to allow you to use your product in greater comfort.

"TRAKTOR PRO 2"

Settings File Import Guide

Before start –Important–

Pioneer provides a settings file exclusively for use with the Native Instruments “TRAKTOR PRO 2” DJ software. TRAKTOR PRO 2 can be controlled from this unit by importing this file.

- A computer on which TRAKTOR PRO 2 is installed is required.
- Not all functions of TRAKTOR PRO 2 are supported. Users should make their own settings as necessary.
- To make additional settings, see the TRAKTOR 2 operating manual (PDF file) included with TRAKTOR PRO 2.
- To operate TRAKTOR PRO 2 using this unit’s buttons, see the separate “DDJ–WeGO 2 Hardware Diagram for TRAKTOR PRO 2” (PDF file) table of supported functions.

Notice:

- Pioneer will accept no responsibility whatsoever for damages resulting from downloading or installing this settings file. Operation of this settings file is not guaranteed.
- Users should take full responsibility for downloading, installing and using this settings file.
- The specifications of this settings file are subject to change without notice.
- Please note that services regarding this settings file may be terminated without notice.


Disclaimer:

Please note that Pioneer will accept no responsibility whatsoever for loss or damage to the customer’s computer caused by the operations based on the information in this Guide. It is advised to use this information at your own risk and on your own responsibility.

Backing up the current settings file

We recommend backing up using the procedure below so that the current settings can be restored if necessary.

— This operation is not necessary for those using TRAKTOR PRO 2 for the first time.

1. Select  (Preference) in the upper right of the screen.
2. On the [Preferences] window, click [Export].
3. Check the items to be backed up, then click [OK]. Give the file an easily identifiable name (e.g.: BackUp.tsi) and save it in the desired location.



Importing a settings file

Cautions:

When another settings file has been imported before, this procedure may not operate properly. In this case, delete the imported settings file before performing this operation. For details, see “Deleting the settings file” on page 2.

1. Save the settings file.

Unzip the downloaded file and save it below location depend on your computer.

— For Windows PC Users

My Documents¥Native Instruments¥Traktor 2.x.x¥Settings

— For Mac OS X Users

Documents/Native Instruments/Traktor 2.x.x/Settings

2. Connect DDJ–ERGO2 and a computer using the USB cable, then turn on the power of DDJ–WeGO2.

3. Launch TRAKTOR PRO 2.

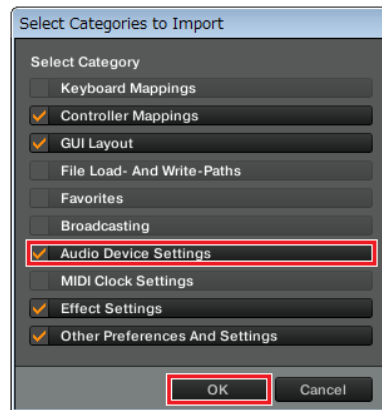
4. Select (Preference) in the upper right of the screen.

5. Click [Import] on the [Preferences] window.

Select the “PIONEER_DDJ–ERGO_Vxxx.tsi” file saved in step 1.

6. Click [OK] to load the settings file.

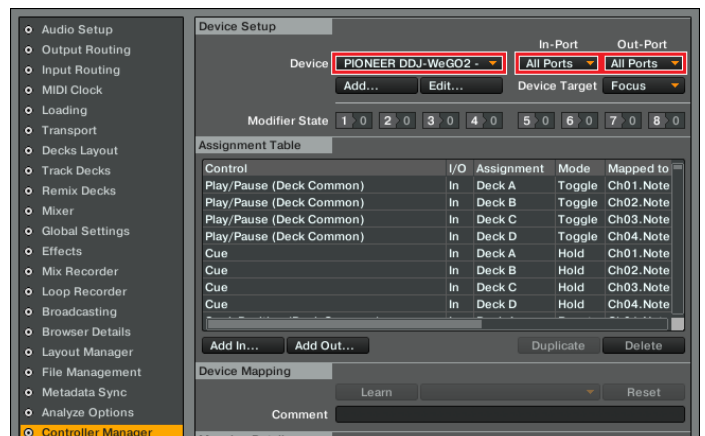
[Audio Device Settings] is not selected at this stage. Tick the checkbox of [Audio Device Settings] and press [OK].



7. Device Settings

Open [Controller Manager], select [PIONEER DDJ–WeGO 2] at [Device], then ensure that [All Ports] is selected for [In–Port] and [Out–Port].

— If DDJ–WeGO 2 does not work properly in the above settings, select DDJ–WeGO 2 for [In–Port] and [Out–Port].



8. Audio-related settings

Follow the instructions below to configure audio-related settings.

(1) Audio Setup

— For Windows PC Users

■ **Audio Device** : Pioneer DDJ_WeGO 2 ASIO

— For Mac OS X Users

■ **Audio Device** : PIONEER DDJ-WeGO 2 Audio Out

(2) Output Routing

— For Windows PC Users

■ **Mixing Mode** : Internal

■ **Output Monitor** :

L 3:DDJ-WeGO 2 PHONES L

R 4:DDJ-WeGO 2 PHONES R

■ **Output Master** :

L 1:DDJ-WeGO 2 MASTER L

R 2:DDJ-WeGO 2 MASTER R

— For Mac OS X Users

■ **Mixing Mode** : Internal

■ **Output Monitor** :

L 3: Pioneer DDJ-WeGO 2 PHONES L

R 4: Pioneer DDJ-WeGO 2 PHONES R

■ **Output Master** :

L 1: Pioneer DDJ-WeGO 2 MASTER L

R 2: Pioneer DDJ-WeGO 2 MASTER R

(3) Mixer

■ **Level** : Check “Set Autogain When Loading Track”.

■ **Headroom** : -6dB

Note: Please note that the audio quality is different from that of Virtual DJ bundled with DDJ-WeGO2.

(4) Mix Recorder

■ **Source** : Internal

9. Close TRAKTOR PRO 2 and turn off the power of DDJ-WeGO2. Then, after turning on the power of DDJ-WeGO2, reboot TRAKTOR PRO 2.

Now, all the settings are completed.

CAUTIONS

■ First, turn on the power of DDJ-WeGO2. Then, run the Traktor PRO2 software. If you launch them in reverse order, Traktor PRO 2 may not be controlled by DDJ-WeGO2 or no sound may be output.

■ If you launch them in reverse order, close TRAKTOR PRO 2 and turn off the power of DDJ-WeGO2. Then, after turning on the power of DDJ-WeGO2, restart TRAKTOR PRO 2 and check all the settings of [8. Audio-related settings].

■ Deck A/B supports Track Deck and Deck C/D supports Mix Deck in this settings file. Other settings are not recommended.

■ TRAKTOR PRO 2 is a product of Native Instruments. Pioneer is not in the position of answering any inquiries on the usage of TRAKTOR PRO 2. Please refer to the Operation Manual of TRAKTOR 2 or other resources.

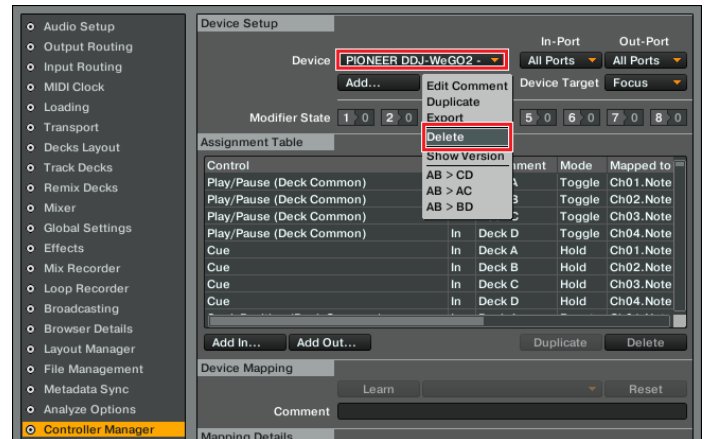
Appendix: Deleting the settings file

If other settings files have already imported, both the software and DDJ-WeGO2 might not work properly. In such a case, please follow the steps below to delete the already imported settings file.

1. Select [Controller Manager] from the [Preference] window.

2. Select the device to be deleted from [Device] and execute the [Delete] command from the [Edit...].

— When [YES] is selected; “None” is shown in the [Device].



About trademarks and registered Trademarks

- Pioneer is a registered trademark of PIONEER CORPORATION.
- TRAKTOR is a registered trademark of Native Instruments.
- Windows is either registered trademarks or trademarks of Microsoft Corporation in the United States and/or other countries.
- Mac OS is a trademark of Apple Inc., registered in the U.S. and other countries.
- The names of companies, products and technologies in this Guide are registered trademarks or trademarks of each company.

© 2013 PIONEER CORPORATION.
All rights reserved.

PIONEER CORPORATION

1-1, Shin-ogura, Saiwai-ku, Kawasaki-shi, Kanagawa 212-0031, Japan